

THE WIDEST AND THE BEST JACKING BEAM!

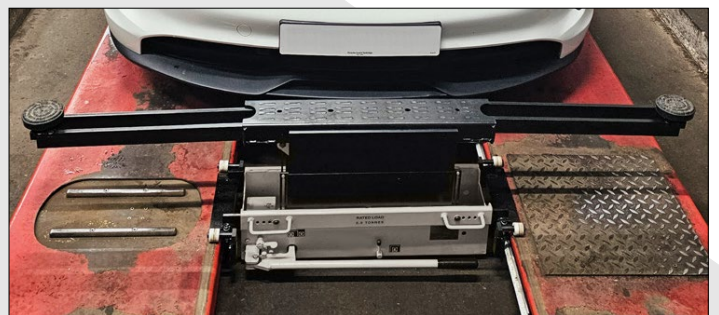
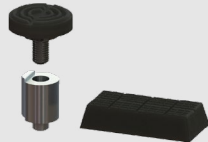
The perfect solution to lifting modern vehicles including EVs.

Our impressive new top beam is an industry leading 1875mm to the centre of the pads, while still retaining a closed width of only 790mm.

Designed for both the 2 and 2.8 tonne jacking beams. It will be fitted as standard on all models and is retrofittable.

Supplied with new style accessories:

- 2 x Adjustable lift pads.
- 2 x 70mm extensions.
- 2 x 40mm rubber blocks.



ALREADY HAVE AN EXISTING JACKING BEAM?



Supplied with new style accessories:

- 2 x Adjustable lift pads.
- 2 x 70mm extensions.
- 2 x 40mm rubber blocks.
- 2 x Upper finger guards.



The perfect solution to upgrade your beam so it can now lift modern vehicles including EVs.

Our impressive new top beam is an industry leading 1875mm to the centre of the pads, while still retaining a closed width of only 790mm.

This retro fit kit has been designed to fit existing 2 and 2.8 tonne jacking beams currently fitted with double extending top beam. (Narrow beams need further slight modification.)

Full fitting instructions provided to make the job a quick and easy task.

Further accessories and vehicle specific pads also available upon request.